

## Eiger - Tuneable Bass Trap

Bass Trap  
HIGH END

### Specifications

**Acoustic performance:**  
Absorption range |  
Tuned Frequency:

#### EG

Dim. | 595x595x201 mm  
Weight | 10,20 Kg  
Units per box | 1  
Box Weight | 12,25 Kg\*

**Installation** - Mechanical

**Packing Dimensions** - 640x385x640mm

\* Approximate weight

### Product finishes:

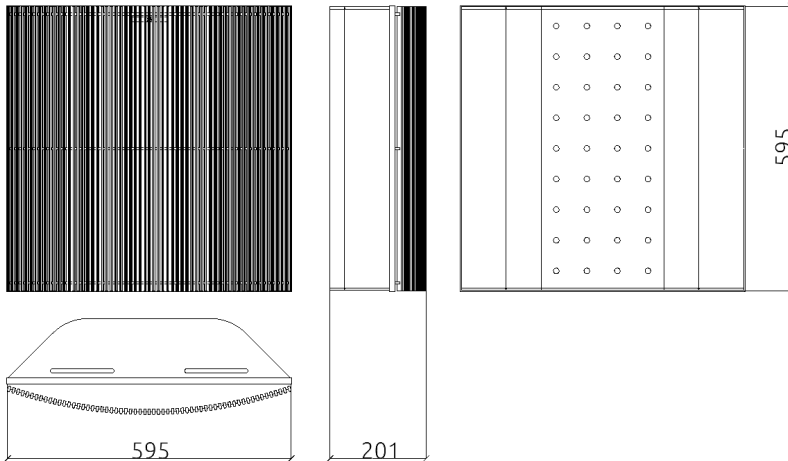


Cerise Marron Rouge Wenge

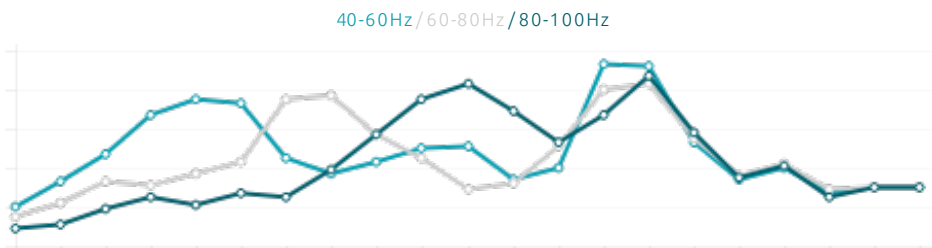
### Description

With a timeless and exquisite design, Eiger is an Artnovion flagship product. It is well known that wood panels naturally absorb unwanted room modes, instantly improving sound quality. We incorporated into our Bass Trap design, producing a truly outstanding product. Lovingly handmade from wood. Eiger Bass trap's absorption range can be modified from 45 Hz to 125 Hz, with a Tuneable Helmholtz system, with absorption peaks at 45Hz|70Hz|85Hz.

### Technical Information



### Performance



hello@artnovion.com  
www.artnovion.com